

CYPRUS

CYPRUS - BRITISH OCCUPATION



2202	⊙	(1), 1/2 d. plate 19, cancelled with "942" LARNACA. Catalogue Price 1.100 €.	F	400
2203	⊙	(2), 1 d. plate 201. VF		25
2204	★	(2), 1 p. Pl. 205 with overprint CYPRUS, some small stain spots		10
2205	★	(2), 1 d. plate 215. F		8
2206	★	(2), 1 d. plate 217. VF		5
2207	(★)	(4), 4 d. VF.		30



2208	(★)	(9), 1/2 d./1 d. plate 218. F		20
2209	⊙	(10), 30 pa./1 d. plate 220. VF		100
2210	★	(11), 1/2 pi. emerald, watermarked with "CC". F		100
2211	⊙	(11/14), 4 values, cancelled with "982" (FAMAGUSTA). VF		200
2212	⊙	(11/13), 3 values, die I, watermarked with "CC". VF		50
2213	⊙	(11), 1/2 pi. die I, watermarked with "CC". VF		25



2214	(★)	(12), 1 pi. die I, watermarked with "CC". F		70
2215	⊙	(12), 1 pi. die I, watermarked with "CC". VF		20
2216	⊙	(13), 2 pi. die I, watermarked with "CC". VF		18
2217	⊙	(16/22), cpl. set. VF		70
2218	⊙	(16/21), 6 values die I, watermarked with "CA". VF		45
2219	★	(17), 30 pa. lilac, die I, with watermark "CA". Regummed. VF		15

ΠΡΟΣΟΧΗ! Στείλτε τις εντολές σας όσο νωρίτερα μπορείτε. Δεν μπορούμε να εγγυηθούμε την σωστή διαχείριση των εντολών που φτάνουν μία ώρα (ή λιγότερο) πριν την έναρξη της δημοπρασίας.

ATTENTION! Send as early as possible your bids. We cannot guarantee the correct process of bids that arrive one hour (or less) before the auction starts.



2220	★	(22), 12 pi. brown orange, die I, with watermark "CA". F	100
2221	★	(25), 1/2/1/2 pi. VF	75
2222	⊙	(27), 1/2 pi./1/2 pi., die I, watermarked with "CA", space 6 mm, stained	30
2223	⊙	(32), 4 pi. die II, watermarked with "CA", cancelled with red handstamp "R". VF	20
2224	★	(35/44), 10 values cpl. set. VF	170
2225	★	(45/50, 52), 7 values all VF	60



2226	★/(★)	(45, 46, 50, 52), 4 values. VF	30
2227	★	(54), 45 pi. with overprint "SPECIMEN". VF	180
2228	★	(55, 56, 58, 59, 61/65), 9 values. VF	70
2229	⊙	(67), 10 pa. orange and green in B4, cancelled with "NICOSIA". VF	8
2230	★	(77), 45 pi. with overprint "SPECIMEN". VF	120
2231	★	(90), 9 pi. VF.	15



2232	★	(110), 9 pi. marginal copy with plate number "1". R and VF	5
2233	★	(127/137), 11 values cpl. set. F to VF	90
2234	★★	(VI. 138/141), 4 values cpl. set. VF	35
2235	★★	(VI. 142/144, 164/165, 168/171, 172), 10 values, 4 cpl. sets. VF	14

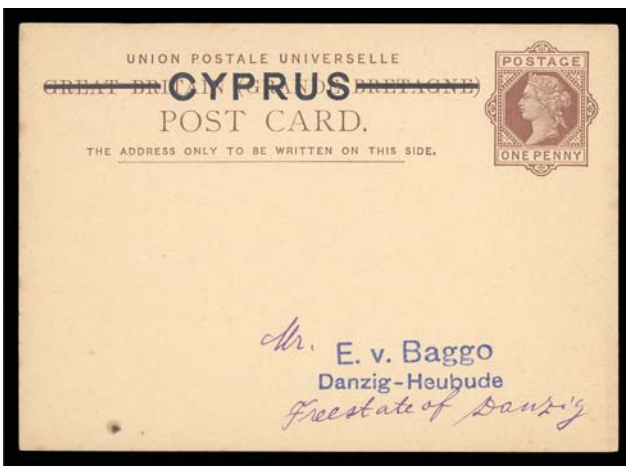
**Starting prices in euro. Commission 22,14% (including V.A.T.)
Bids under starting price will not be accepted.**



- 2236 ★ (145/163), 19 values cpl. set. VF 45
- 2237 ★★ (VI. 166/167), 2 values cpl. set. VF 40
- 2238 ★★ (173/187), cpl. set. VF 70



- 2239 ☒ P.S.P.C. 1/2 pi. (Fr. P.C. 10). VF. 15
- 2240 ☒ P.S. WRAPPER 1 pi. (Fr. W. 3). VF 15



- 2241 ☒ P.S.P.C. 1 d. (Fr. P.C. 2). VF. 10
- 2242 ☒ P.S.P.C. 1/2 pi. (Fr. P.C. 4). F. 5

Εντολές με e-mail. e-mail bids. (vlastos.gr@gmail.com)
 Θα λάβετε επιβεβαίωση. Μην στέλνετε e-mail μετά τις 13.00 την ημέρα της δημοπρασίας.
 You will receive confirmation. Do not send e-mails after 13.00 the day of the auction.



2243 ✉ WRAPPER, 1/2 pi. posted to Athens. VF. 15



- 2244 ⊙ R.P.O. "10" (Castle type 36) on 1/2 pi. G 8
- 2245 ⊙ "AKACHA RURAL SERVICE E.R." postmark on 3/4 pi. F 15
- 2246 ⊙ "AMIANDOS" cds on 3/4 pi. VF 7
- 2247 ⊙ "ANAPHOTIA RURAL SERVICE G.R." postmark on 3/4 pi. F 10



- 2248 ⊙ "ANDRONICO E.R. RURAL SERVICE". F 5
- 2249 ⊙ "ANGLISSIDES RURAL SERVICE E.R." postmark on 1/2 pi. VF 20
- 2250 ⊙ "ANOVIRA RURAL SERVICE G.R." postmark on 1 1/2 pi. VF 20
- 2251 ⊙ "ARODHES RURAL SERVICE G.R." on 3/4 pi. G 20
- 2252 ⊙ "ASCATA RURAL SERVICE E.R." postmark on 10 pa. VF 15



- 2253 ⊙ "ASHA RURAL SERVICE V.R." postmark on 1 pi. F 10
- 2254 ⊙ "ASKAS RURAL SERVICE E.R." on 5 pa. VF 30
- 2255 ⊙ "ASTROMERITI RURAL SERVICE E.R.". VF 16
- 2256 ⊙ "ASTROMERITI RURAL SERVICE E.R." on 3/4 pi. VG 15



- 2257 ⊙ "AY. ANDRONICO RURAL SERVICE E.R." postmark on 1 pi. VF 15
- 2258 ⊙ "AYIOS SERGIOS RURAL SERVICE V.R." postmark on 1 pi. VF 20
- 2259 ⊙ "AY. VARVARA G.R. RURAL SERVICE" postmark on 1 1/2 pi. VF 15
- 2260 ⊙ "DAVLOS RURAL SERVICE E.R." on 1/2 pi. F 15



- 2261 ⊙ "DAVROS RURAL SERVICE E.R." on 1 pi. VF 25
- 2262 ⊙ "EVRYKHOU" cds type 2 on 1/2 pi. G 5
- 2263 ⊙ "GALATA RURAL SERVICE G.R." on 1 pi. F 15
- 2264 ⊙ "GALINOPORNI RURAL SERVICE G.R." on 1/2 pi. F 10
- 2265 ⊙ "ENKOMA RURAL SERVICE G.R." on 1/4 pi. VF. 20



- 2266 ⊙ "KAKOPETRIA RURAL SERVICE G.R." on 3/4 pi. VG 10
- 2267 ⊙ "KALAVASSO RURAL SERVICE E.R." on 1/2 pi. VG. 10
- 2268 ⊙ "KALAVASSO MINES RURAL POSTAL SERVICE" on 2 pi. pair. VF 35
- 2269 ⊙ "KARPAS VR RURAL SERVICE". VF 15
- 2270 ⊙ "KOMIKEBIT VR RURAL SERVICE". F. 5



- 2271 ⊔ "R.P.O. KALOKHORIO" cds on 3/4 pi. SUPERB. 30
- 2272 ⊙ "KALOPANAYOTI" cds on 1/2 pi. VG 5



- 2273 ⊙ "KALOPANAYOTI" cds on 1/2 pi. VG 5
- 2274 ⊙ "KAMBOS RURAL SERVICE G.R." on 1 pi. SUPERB 30
- 2275 ⊙ "KARPAS RURAL SERVICE V.R." on 1 pi. VF 25
- 2276 ⊙ "RURAL SERVICE V.R. KARPAS" postmark on 1/2 pi. VF 15
- 2277 ⊙ "KARPA RURAL SERVICE V.R.". VF 20



- 2278 ⊙ "KHARTZIA RURAL SERVICE G.R." on 1 pi. VF 15
- 2279 ⊙ "KHIROKITIA STATION RURAL SERVICE G.R.". F. 15
- 2280 ⊙ "KHRYSSOKHOU RURAL SERVICE V.R." on 1/2 pi. F 10
- 2281 ⊙ "KOMA TOU YIALOU SERVICE E.R." on 1/2 pi. VG 15
- 2282 ⊙ "KORHINOY RURAL SERVICE E.R." on 3/4 pi. VF 10



- 2283 ⊙ "KORMAKITI RURAL SERVICE G.R." on 1 pi. G 5
- 2284 ⊙ "KOUKLIA RURAL SERVICE G.R." on 1/2 pi. F 15
- 2285 ⊙ "KYTHREA A JU 14 95" cds on 1/2 pi. VF. 5
- 2286 ⊙ "LEFKONIKO" on 1/2 pi. Victoria. VF 20
- 2287 ⊙ "LINOY RURAL SERVICE E.R.". VF 15



- 2288 ⊙ "LINOY RURAL SERVICE E.R." on 1/2 pi. VG. 5
- 2289 ⊙ "LYSI FA RURAL SERVICE G.R." on 1/2 pi. G. 5



- 2290 ⊙ "MALOUNDA (NICOSIA) RURAL SERVICE G.R.". VF 18
- 2291 ⊙ "MARATHASSA RURAL SERVICE". F 15
- 2292 ⊙ "MARATHASSA RURAL SERVICE V.R." on 1/2 pi. F. 10
- 2293 ⊙ "MARATHOVOUNO RURAL SERVICE V.R.". VF 20



- 2294 ⊙ "MARATHOVOUNO RURAL SERVICE V.R." on 3/4 pi. F 10
- 2295 ⊲ "MENIKO RURAL SERVICE G.R." on 10 pa. SUPERB. 30
- 2296 ⊙ "MESSA OREA RURAL SERVICE". F 15
- 2297 ⊲ "MITSERO RURAL SERVICE G.R." on 3/4 pi. VG 5



- 2298 ⊙ "MITSERO RURAL SERVICE G.R.". F 15
- 2299 ⊙ "MITSERO RURAL SERVICE G.R." on 1 pi. F 10
- 2300 ⊲ "MYLIKOURI RURAL SERVICE G.R." on 3/4 pi. F 10
- 2301 ⊙ "MYRTON RURAL SERVICE V.R." on 1/2 pi. VF 20
- 2302 ⊙ "MYRTON RURAL SERVICE V.R." on 1/2 pi. VF 20



- 2303 ⊙ "ORA RURAL SERVICE V.R." on 1/2 pi. VG 15
- 2304 ⊙ "ORA" cds type 2A on 1/2 pi. VG 10



- 2305 ⊙ "REGISTERED PAPHOS" oval ds on 1 pi. B4. SUPERB 15
- 2306 ⊙ "PHINI CYPRUS" cds on 1 pi. SUPERB 15
- 2307 ⊙ "PISSOURI RURAL SERVICE V.R." on 1 pi. VF 10



- 2308 △ "PIYI RURAL SERVICE G.R." on 1/3 pi. SUPERB 30
- 2309 ⊙ "PRASTIO RURAL SERVICE V.R." (illegible) on 1/2 pi. G 10
- 2310 △ "PRASTION (F-GUSTA) RURAL SERVICE G.R." on 1 1/2 pi. VF. 20
- 2311 ⊙ "PSIMOLOFOU RURAL SERVICE E.R." on 1 pi. G. 10



- 2312 ⊙ "SCARINOU BRIDGE E.R. RURAL SERVICE". VF 20
- 2313 ⊙ "SKARINOU STATION" cds on 1 pi. SUPERB 20
- 2314 ⊙ "TAVROS RURAL SERVICE E.R." on 1/2 pi. F 10
- 2315 △ "TAVROS RURAL SERVICE E.R." on 3/4 pi. VG. 5

Η ΔΗΜΟΠΡΑΣΙΑ ΘΑ ΓΙΝΕΙ ΣΤΟ ΞΕΝΟΔΟΧΕΙΟ: **CROWNE PLAZA** THE AUCTION WILL TAKE PLACE IN:

ATHENS CITY CENTRE

40, MICHALAKOPOULOU Str. - ATHENS 115 28 - GREECE, Tel. +30-210.72.78.000, Fax. +30-210.72.48.187



- 2316 ⊙ "TRIS ELIAES RURAL SERVICE G.R." on 1/2 pi. VG 10
- 2317 △ "TSAKISTRA RURAL SERVICE G.R." on 1/4 pi. + 1/4 pi. SUPERB 35
- 2318 ▽ "VASILIA G.R. RURAL SERVICE". VF 20
- 2319 ⊙ "VASSA RURAL SERVICE V.R." on 2 pi. SUPERB. 30

REPUBLIC OF CYPRUS



- 2320 ★★ (1/15), 15 values cpl. set. VF 70
- 2321 ★★ (24/36), 13 values cpl. set. VF 40
- 2322 ★★/⊙ (24/36), 13 values cpl. set u/m and used. VF 65
- 2323 ★★ (37/39), 3 values cpl. set in B4 overprinted with "SPECIMEN". VF 50



- 2324 ★★ (37/39), 3 values cpl. set. VF 40
- 2325 ★★/⊙ (37/39), 3 values cpl. set mint and used. VF 45
- 2326 ★★ (37/39, 187/190, 209/213), 4 sets, overprinted with "SPECIMEN". VF 15
- 2327 ★★ (B1a), 250 m. Miniature Sheet with inverted watermark. VF. 60



- 2328 ★★ (47/49), 3 values cpl. set EUROPA 1963. VF 40
- 2329 ★★ (62/64), 3 values cpl. set EUROPA 1964. VF 25
- 2330 ★★ (75/77, 80/82), 2 cpl. sets. VF 30
- 2331 ★★ (95/108), 14 values cpl. set in B4 overprinted with "SPECIMEN". VF 100



- 2332 ★★ (167/180), 14 values cpl. set in B4 overprinted with "SPECIMEN". VF 50
- 2333 ★★ (167/180), 14 values cpl. set overprinted with "SPECIMEN". VF. 15
- 2334 ★★ Lighthouse album for Cyprus 1960-1979 with some good u/m sets (for example EUROPA 1962, 1963, 1965 etc).
Catal. value for the sets (album price not included) about 420€. Very favourable starting price 150

Εντολές με e-mail. e-mail bids. (vlastos.gr@gmail.com)

Θα λάβετε επιβεβαίωση. Μην στέλνετε e-mail μετά τις 13.00 την ημέρα της δημοπρασίας.

You will receive confirmation. Do not send e-mails after 13.00 the day of the auction.

ΠΡΟΣΟΧΗ! Στείλτε τις εντολές σας όσο νωρίτερα μπορείτε. Δεν μπορούμε να εγγυηθούμε την σωστή διαχείριση των εντολών που φτάνουν μία ώρα (ή λιγότερο) πριν την έναρξη της δημοπρασίας.

ATTENTION! Send as early as possible your bids. We cannot guarantee the correct process of bids that arrive one hour (or less) before the auction starts.